

The background features a stylized, winding road with white dashed lines on a dark grey surface. The road curves around a light grey map area. On the map, there are yellow lines representing streets and several blue location pins. Two pins in the upper left contain question marks, while two pins in the lower left contain a stylized logo consisting of a blue circle with a brown and blue geometric design inside.

# ALIVE

Wesleyan Church



2016/2017  
Annual Report



Table of Contents

Church Conference Agenda.....page 4

Church Conference Guidelines.....page 5

Leadership Requirements.....page 5

REPORTS:

Senior Pastor.....page 6

Executive Pastor .....page 12

Discipleship Pastor .....page 15

Connections.....page 17

Pastor of Congregational Care.....page 19

Student Ministries Pastor .....page 21

Children’s Pastor .....page 22

The Growing Place .....page 23

Operations Pastor .....page 25

Campus Pastor .....page 27

Residents.....page 29 – 31

Global Outreach Team .....page 33

Treasurer.....page 35

Sample Ballot.....page 40

Attendance & Income Trends .....page 41

Web & Media Stats.....page 42

2016 -17 Recommended Budget.....page 44

Hope Grows Here .....page 45

## Agenda | May 21, 2016

1. Welcome
2. Conference Guidelines
3. Elections
4. Executive Pastor Report
5. Proposed Budget
6. Recognitions

Retiring LBA Members

Staff

7. Senior Pastor Report
8. Election Results
9. Closing Prayer

## Guidelines

Here are some guidelines we use in order to make our business meeting run effectively and efficiently:

**Ballot results:** Our Local Church Conference has a standing rule that we will only announce the winners of the elections and not the numbers of votes each person on the ballot received, unless this information is needed for a second ballot.

**Nominations:** ALIVE Wesleyan Church uses a Local Board of Administration voted on by the Church Conference. The LBA presents a final nominations ballot to the church conference. However, nominations can be made from the floor, and no seconds are necessary. If the person being nominated is present, he or she can accept or decline nomination. Once nominations from the floor have all been made, the chair will close nominations.

**Staff reports:** The Church Conference will accept all the staff reports after the report of the Senior Pastor. This is done by a recommendation from the floor and a second, followed by voting.

**The Treasurer report:** This report is not voted on by the Church Conference but referred to the Auditing Committee.

**Making a motion:** To make a motion the following steps are taken:

- Chairman recognizes person desiring to make a motion
- Motion is made
- Motion is supported (seconded) by another member
- Motion is stated by the chair
- Motion is debated by the members
- After any debate, Chair puts the motion to vote
- Chair announces the vote

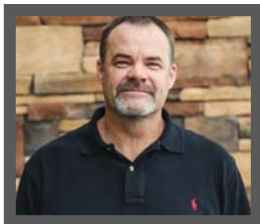
## LEADERSHIP REQUIREMENTS

---

### Nominations 2017 - 18

All positions of leadership within the church carry certain expectations. Here are a few of the expectations of church leadership:

- Be faithful in your attendance at church services and activities.
- Give regularly of your income with the tithe considered as a minimum.
- Represent the membership of the church in your voting and discussions.
- Lead an exemplary life of Christian faith and conduct.
- Assume a specific area of service within the church.
- Support the majority action of the Local Board of Administration and the Local Church Conference.
- Be a person of faith, believing God can do anything He asks us to do.



## SENIOR PASTOR | Tom Harding

---

It is with a thankful heart that I share this report. It has been a good year for ALIVE. The addition of several staff people eased the burden many of us felt at this time last year. It is appropriate to acknowledge Paul Haithcock who continues to share the weight and responsibility of leadership at ALIVE. This year Paul started leading and managing the staff of ALIVE. This allowed me to take more of a coaching role for the staff Department Heads.

With the addition of staff and a change in responsibilities, I began to sense God redefining my role in the church. Where I used to have input on just about everything that happened at ALIVE, it is no longer that way, and that is a good thing. Responsibilities have been handed over to capable people.

As my daily responsibilities changed, I began to wonder what God would have me do and what he was positioning me for. I spent a good part of the past year seeking God through personal disciplines and time away. I also sought the counsel of others I love and respect.

In one of those times away, God led me to a point where I was ready to hear from him. I was in my room spending the morning seeking God and I wrote these words in my journal, knowing I was hearing from the Lord about my role at ALIVE.

*My daily responsibilities for the ministry at ALIVE have lessened, but the responsibility of charting the course of all that is ALIVE has risen in its importance, opportunity and need.*

The days of beginning a church or transforming a local church are behind us, and ALIVE is secure in our identity as a church. We are successful and increasing in influence and opportunities. It is satisfying to know this church is making a difference in our community. To say it another way, if ALIVE closed its doors, the community would know it, and that is a great achievement for any local church. God has blessed our church with resources and with talent.

As you have heard me say before, we now have two deals on the table. One deal is we rest on our laurels, so to speak. We enjoy who we have become and take our collective foot off the gas. The other deal on the table is we press into uncharted waters with who we are and how we reach the 96,000. If you know me, deal one is no deal at all. If we choose the first deal, we have signed our own death warrant. Maybe we will stay afloat during our life times, but we will hand the keys of an insignificant, dying congregation off to our children. And from what I observe of the children and student ministries of ALIVE, our children will not be very happy with us if we hand over a *movement* that slipped into *maintenance mode*. None of us want to do this.

I live and breathe church world. I study the trends and the landscape of dynamic churches. I am keenly aware that moment a church stops reaching for its vision, it begins to die. I am not speaking of a temporary period of rest or reprieve, allowing infrastructure items to get caught up with the growth. But if ALIVE decided to settle and stay where we are, we would cease to be following God. If we become content with how things are today, we miss the opportunities of tomorrow.

And as I look at the overall organization of ALIVE, here is my confession: I'm concerned ALIVE as an organization might stand in the way rather than stand in the gap, to make a movement of God possible in our communities.

*It is the familiar tension of keeping an organization organic enough so the movement can grow.*

I have a couple of evidences I point to in support of my concern. One of the areas I had to surrender in my heart was the trapping of Success. ALIVE has the option of being content with doing good things in the name of a strong church; and as a result being distracted from the great things God may call us to risk. With success comes the desire for safety because any failure then seems bigger.

But there was another area God revealed to me that needed to be surrendered; it was the trapping of Control. It is easier and more comfortable to lead a successful organization (Church) than it is to discern the risk-filled leading of Holy Spirit directives. Everybody loves an organization with charts and trends that go up and to the right. And the more success an organization has, the greater the desire to control every part of the organization. But I can't control everything at ALIVE which leads to this conviction I recorded in my journal.

*ALIVE is called to do more than has already been done and must be willing to radically change even what is already being done successfully to enable the Spirit to move in even mightier ways.*

As a result of this spiritual journey, I put a couple of things before the board and the staff. We are continuing to pray about all these things, but I desire for you to know what I am thinking and sensing from God.

Our church must replace the model of addition with multiplication when it comes to reaching the 96,000. In other words, we need to become a multiplying congregation. There are key areas that need our attention as we move into this new identity as a church.

In order to be a multiplying church, we need to be a church that intentionally disciples men and women of God who are willing to lead such a movement. I am asking God to raise up the next leaders of ALIVE's obedience from within our walls. I am asking God for church planters, campus pastors, youth pastors, worship leaders and children's pastors to come forward from within the walls of ALIVE.

It is easy to hire credentials but far more difficult to hire the heart of ALIVE. We have a clear purpose as a church. We want to reach spiritually hungry people and introduce them to a personal relationship with Jesus and an active role in healthy Christian community. We have a clear strategy in place represented by the word ALIVE. Adoring our God. Loving our community. Instructing believers. Valuing the Lost. Equipping people for ministry. We budget for all ages according to these purposes, but my concern is are we raising up men and women to lead the movement of God?

So here are the areas I am sensing God's leading in at ALIVE.

**Small groups**—We have successfully launched a small group program at ALIVE. More people are involved in small groups than ever before in our history. And these small groups are mostly meeting in neighborhoods, a strategic testimony to the 96,000. We are currently evaluating the model of running small groups year round as opposed to the current model of two semesters. There are pros and cons to both models, but the question we are asking ourselves is this:

*Are we a church WITH small groups or a church OF small groups?*

If we are a church of small groups then what happens to the church when we take a break or when we deconstruct our small groups every 6 months or so? Are we fostering life long relationships with our current model or could we multiply our healthy communities by having small groups multiply themselves and stay in community? Justine is taking these questions and researching next steps for ALIVE in the area of Small Groups.

**4-D**—To give people the opportunity to become leaders of the multiplication movement of ALIVE, we need to ramp up intentional discipleship opportunities. What if a person desires to go deeper in the Lord or to intentionally embrace a path toward leadership in the multiplication movement at ALIVE? Our current model is to get people into small groups and hopefully see people grow. I think we can create a better model than this, and this is where the 4-D model comes into play.

The first D is Discovery and it will focus on Membership. We already have our Discovery Class, and this year we have run more of these classes than ever before. It is the way people who desire to become members can join the church. This is a good thing and could be further developed to explore why a person should consider membership and the value of membership in the life of a believer.

After people go through Discovery, they may find a desire to Deepen their walks with the Lord, to learn how to relate to God in a personal way. Discovery focuses on Membership. Deepen focuses on Maturity. Deepen teaches people how to study the scriptures for themselves. How does a person learn to pray? How does a person honor God with time, talent and treasure?

*ALIVE doesn't want to spoon feed; we want to provide spoons.*

This class provides all the tools needed for a person to feel empowered in their personal, relational growth with Jesus and to mature in Christ.

Once a person has experienced Discovery and Deepen, the goal of the Define class is Ministry. Define gives people the opportunity to learn what their spiritual gifts are and how best to use them. Everybody has a unique SHAPE and that shape is defined in this class. God gave each and every person on the planet a set of gifts and abilities. He gave us our personality, our strengths and our gifts for a specific purpose. In Define, we learn what God's word says about our spiritual gifts and how we can use them at ALIVE to help in the multiplication movement.

Discovery leads to Membership. Deepen leads to Maturity. Define leads to Ministry and finally Decide leads to Mission. When a person walks an intentional path of understanding and maturity, a sense of urgency and excitement begins to form about "getting in the game." God has equipped us and empowered us, so this reality results in a desire to play. Decide leads people through the process of identifying missions in the world to be a part of, and it provides the challenge to produce change in the world. Orphans and Adoptions. Clean Water. Spiritual vitality. Feeding the hungry or addressing the needs of



the poor. I am praying that some will come forward and say we want to be part of the multiplication at ALIVE, to help plant churches and campuses in the Upstate and beyond.

The intention is for our small groups to be feeder groups for the 4D initiative. Entire small group communities will grow deeper with each other as they walk through intentional, purposeful spiritual development.

Discovery leads to Membership.

Deepen leads to Maturity.

Define leads to Ministry.

Decide leads to Mission.

**Staff**—As we head into this multiplication stage at ALIVE, we have to retrain our leadership and equip people with new tools. In a couple of weeks, I will begin training some of our staff on what it means to be purpose driven leaders. This training will continue through most of the summer and be completed by late summer. The staff will then begin to take their teams through a similar study over the course of the fall.

I have sent three staff members to a Church Planter's Assessment where, after a battery of tests and interviews, recommendations were made regarding the health and effectiveness of each of these staff members as church planters, campus pastors or future church leaders. These assessments will be evaluated in June as we discern God's next step.

**Building**—As we multiply we want to make sure we are caring for what God is doing on our campuses. The building project we are revealing to you is the first step in this movement toward multiplication. God continues to bring people to ALIVE in record numbers. To be completely honest, due to the growth rate of ALIVE, we are already behind in providing and caring for those who attend. We have completed our parking lot project and now need to address the record number of children coming to ALIVE. We are already out of space, and we anticipate this wonderful problem to only grow in intensity and importance over the next year.

It is our intention to build a facility that children will love to come to. It will serve not only ALIVE Kids and families, but will allow The Growing Place to double the number of families it ministers to each day!

The plans involve brand new playgrounds on both campuses that will be the talk of the communities! The idea is to create an environment where people in the community want to bring their kids, even if they don't come to church at ALIVE.

We will add office space for the staff members that currently have their offices in hallways or classrooms. We will turn our current large group children's space into another viewing venue on Sunday for families, and it will also become a much-needed meeting place for large groups.

This addition will allow us to continue to attract spiritually hungry people, train them up through the 4D model and send them out to multiply God's work across the upstate.

**96 Reach fund**—For the past two years, ALIVE has set aside part of our regular offerings to help reach the 96,000 through spaces, faces and places. We want to be prepared to move when God prompts us to do so. Our intention is that the entrepreneurial activity empowered by the Holy Spirit doesn't get the leftovers of our money, but instead becomes the budget priority of our regular tithes and offerings. As people faithfully give, we will be prepared to faithfully follow God's leading.

This year we are heightening our intensity related to this fund and intentionally looking for opportunities to multiply the movement across the Upstate. We are asking God for clear direction and opportunity for multiplication. Church leadership has already begun praying about the communities of Seneca, Easley/ Powdersville and Greenville as potential options for future campuses or church plants.

**Global Outreach**—As budgeting time came around this year, Beth sat down with me and revealed a well thought out budget request for our mission partners. Last year we set aside \$33,000 for our mission partners around the world, and this year the request was \$18,000 more for our partners. I asked for 24 hours to pray about this before I answered.

As I think about the idea of missions, I must confess to feeling a bit limited by our organization. I have several priorities when it comes to the mission efforts of ALIVE.

1. We want to have partners, not causes. In other words, we want to know the people we support. We want to be a base of prayer and financial support for our mission partners.
2. We want to invest in native mission efforts whenever possible. A key principle of missions work is to empower native ministers to reach their communities with the Gospel of Jesus Christ. This type of missions is generally most effective. Supporting native mission works is also a good stewardship principle, allowing us to do more with less.
3. We want to support mission leaders who are leading movements in different parts of the world by providing leadership and resources to enable churches to minister in their cultures.
4. I am proud of where we are in our mission efforts, but I desire to see and do more with our Global Outreach. It is important for ALIVE people to experience mission work first hand and explore opportunities to be the hands and feet of Jesus. Our current budget reflects not an \$18,000 increase but a \$52,000 increase. We will look for ways to encourage pastors, explore mission fields, and meet needs around the world. I hope for our staff and church leaders to be involved in conferences around the world.

A high priority for me is to allow people from ALIVE to experience mission work. Search and rescue are part of the DNA of this church and in order for mission to be attractional, it must be a narrative of stories and experiences for the people, staff and leaders of ALIVE. Creating missional hearts will help shape the hearts of ALIVE for the multiplication movement God is calling us to.

**Men's ministry**—Another piece of increasing the intensity of our multiplication heart is to invest in the men of our community. I sat down with the leader of Saddleback Community church's men's ministry. It was encouraging to hear how men were being raised up in the church to lead the church, not just as an organization, but leading the church spiritually. Families are being changed as Husbands and Dads are impacted by a personal relationship with Jesus. I want to be part of seeing this in our community. I want to see the men rally to forcefully advance the Gospel of Jesus in our communities and to identify the men who are willing to walk the talk of Spiritual Leaders. I am studying a book right now that will serve as a model for us in this area, and I hope to implement some of these ideas in the coming year as part of the multiplication movement.

**Church plants and Campuses**—If we can accomplish or at least set in place the things I have mentioned to this point, by this time next year, ALIVE will be in a greater state of readiness to multiply. I am not truly clear on what shape our multiplication will take. My desire is for ALIVE to create a *platform* for new works, not a box.

To be completely vulnerable, I am praying and discerning to see who God might bring forward to be part of the next work at ALIVE. Some may have an interest in leading a campus. I am still hoping, praying and investigating opportunities in the Easley/Powdersville, Seneca and Greenville zip codes.

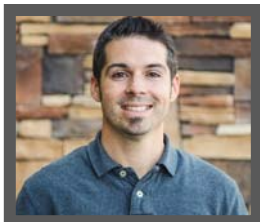
Visions are in cement but our plans are in sand, and that is okay. God has brought ALIVE this far through faithful obedience to His Spirit's promptings and affirmation. We will continue in that posture of prayer and continue seeking God. My hope is for multiple sites that are multiplying their work in their unique zip codes.

This is not about church size. This is about reaching the 96,000 across the Upstate. Nobody loves his bride more than God. ALIVE is the bride of Christ and God will continue to pour out his Spirit on us as we continue to be a people and an organization of faith. We are dependent on God's Spirit to lead.

What would it look like to have 5 new works over the next 5 years? Would God be honored through that if ALIVE began moving in that direction?

Turning 50 has been a great time to evaluate life and life investment. I must confess a great sense of contentment for all that ALIVE is and for the impact we are having in our community. I have no doubt that God loves his bride here. However, those of you who know me best also know my deepest motivation is the calling God has placed on my life and, I believe, on this church. We have an incredible and successful church, but if we are finished here, then so am I. Our DNA is to reach. It is what attracted a great deal of us to this body. I doubt there are many reading this who think we are done. Most of us are sitting on the edge of our seats waiting to see what God does next in this movement called ALIVE. This year will require a major reach in so many areas. God is speaking and God is leading. As always, our role is to get in line and follow, forcefully advancing his kingdom!

Respectfully,  
Pastor Tom



## EXECUTIVE PASTOR | Paul Haithcock

---

Another year of God-sized movement in the life of ALIVE is now behind us. Time moves so quickly that it is hard to keep up with what God is doing and our role in all of it. Time flying by should only intensify our urgency in relentlessly pursuing the 120,000 spiritually hungry people surrounding our campuses; people who are facing a Christless eternity. Our team is more determined than ever to make a difference in our schools, communities, cities, state and world. We are recalibrating and strategizing, narrowing our focus so we can extend our reach and proclaim the name of Jesus more boldly and take it further than we have before. We know God has been preparing ALIVE to be a part of life transformation greater than what we have already seen, and we believe this year is going to be an important step of that journey.

Before I get too carried away thinking about what the next 1, 5 or 10 years could look like at ALIVE, I need to celebrate some incredible things God did this year with and through many of you who call ALIVE home.

As a body this year we:

- Donated approximately 13,000 pounds of food to Clemson Community Care and Belton Interfaith Ministries
- Baptized 25 kids, teenagers and adults into new life with Christ
- Dedicated 11 children to fulfill the plans God has for them
- Brought 149 people into membership
  - 128 Central Campus
  - 21 Pleasant View Campus
- Fed breakfast to over 600 teachers and other school staff
- Gave out 800 discipleship bags to adults, teens and kids to celebrate the meaning of Christmas in a unique and personal way
- Set a new attendance record on Easter Sunday of 2350 people hearing the gospel message of Jesus Christ across ALIVE venues

This is only a snapshot of some of the amazing ministry opportunities that ALIVE folks have been a part of in the last year. I could fill up multiple pages with stories of each of you partnering with ministries like The Dream Center, Special Olympics, Habitat Houses, LOVE Central/Belton projects and many more. The ALIVE family is “alive and well” and is a movement of Christ’s hands and feet in our communities. I LOVE THAT! This is one of the many reasons I am so proud to call ALIVE home.

In addition to the incredible outreach and service opportunities we celebrate, there are also numerous indicators of maturity continuing to spread across our congregation. We have seen a wave of unusually strong interest throughout the ALIVE body in becoming members, learning more about the Bible, deepening our understanding of personal finances and simply put, a yearning for MORE out of this life. It’s almost like we believe Jesus when he said he came to give us “life to the full!”

Since October 2016, I have had the privilege of working alongside and coaching Steven Groves. He has been in our residency program and has filled numerous roles across our campuses. Most likely you have seen him doing announcements, serving communion, dressing up at children’s outreach events, producing services and who knows what else! Behind the scenes, he has been a fun addition to the team and a great help to many of our staff by taking the lead on projects and tasks of all shapes and sizes. He will be finishing his time in the residency program the end of June to join the Residence Life team at SWU. Congrats Steven!

Over the last 12 months, we spent many hours reviewing resumes, scheduling interviews, making new contracts and praying for discernment as we hired multiple staff to keep up with and continue to enhance the growth at ALIVE. We hired Amy Gregory as our Traditional Worship Leader and she is giving 110% to ensure the chapel worship experience continues to reflect excellence, tradition and life. Jake Redmond was brought on board as the Technical Arts Director. From day one we have felt the impact of Jake's creativity and experience in all of ALIVE's worship venues. After a long search, Katelyn Elliott was hired as the Assistant to the Children's Pastor. Her fun energy has already been vital in helping enhance events like the Easter Egg Hunt and Children's Volunteer Appreciation night. Will Henderson was our most recent hire who hit the ground running as our Communications Director. Most likely you have seen a significant difference in the engagement of our social media outlets. This, along with graphic design and the website and app, are Will's main responsibilities. Will has a knack for recruiting people and is already building teams around him in his new role. We believe God has placed each one of these individuals strategically at ALIVE, and we are excited to see how their impact will help us more effectively reach the upstate.

Once again God has blessed ALIVE with reaching more spiritually hungry people this year than last and with seeing more people give Biblically than the previous year. He is providing resources and vision for what's next, and it is exciting. As a team, we are redefining what strategies and systems we use to help people understand a relationship with Jesus and an active role in Christian community. We also renewed our commitment to do everything we humanly can to ensure ALIVE is a place that is overwhelmed with the Spirit of God. We know without Him we are nothing but "clanging cymbals or resounding gongs" and nobody wants to hear that! So I ask you to join us in prayer that God continues to place his hand of blessing on ALIVE as we seek his will and direction.

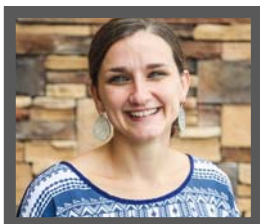
One of the most important things you can be praying for, starting now, is our "Hope Grows Here" campaign. In order to continue to be effective in reaching our community as well as be a place where kids, students, and adults come ALIVE, we have the opportunity to construct an expansion of our Children's facilities. This increases small group and large group spaces, provides additional office space, creates a new play ground site and recreational pieces, as well as increases the number of classrooms for The Growing Place. After studying ALIVE it became evident that we were positioned for growth in our worship environments, but we were behind for growth in parking and children's space. The current parking and children's space issues are working against the mission of reaching the 96,000, making some feel uncomfortable due to over crowding. The Growing Place is functioning at capacity, and a new facility will double our reach to families seeking assistance with caring for their children. This gives us an opportunity to share Jesus with them 5 days a week! Although we have already addressed our parking issue, building a new kids wing is a much larger project which is going to require raising significant funds. We are in the foundational stage of forming teams and strategies to raise the necessary funds to more effectively reach the 10,000 unchurched kids in Pickens County including 6,000 preschoolers. Please pray that God begins to speak clearly to you, me and other ALIVE attendees about how we are supposed to engage with this incredible opportunity to build His Kingdom.

I remain humbled to be part of this movement of God and consider it an honor to serve and lead alongside many of you. My heart beats relentlessly to see freshly redeemed lives from all over the upstate SC pass through the doors of ALIVE campuses. And I long to see church plants spreading across our state and the southeast as people experience Jesus Christ transforming their communities. Imagine that!

Paul Haithcock  
Executive Pastor

**Freedom from the  
home wrecker of  
shame  
requires courage  
to confess.**

**-Phone-y Family**



## DISCIPLESHIP PASTOR | Justine Tegen

---

Have you ever lined up a kid's elementary school pictures from one grade to the next? The change from year to year can be stunning, but that growth is almost imperceptible in the day to day. Spiritual growth is a little like that—easier to see in snapshots and almost imperceptible day to day.

Every once in a while we step back to compare snapshots in adult discipleship at ALIVE. The snapshots from this past year are stunning. Last year at this time we were just launching our Pleasant View Campus and dreaming of the groups that may take place there. This year 53 individuals participated in small groups on our new campus.

Last year we were dreaming of new teaching opportunities through ALIVE University. Now, we can celebrate 373 adults who took part in an ALIVE University study this year. Just one year ago, we were wrestling with how to engage families on Christmas morning. Today we look back on 860 discipleship bags that families and individuals used for personal discipleship this Christmas. One year ago, we were talking about how to add to our Stephen Ministry. Today, we celebrate two newly trained Stephen Ministry Leaders and 880 hours of care-giving.

These numbers only tell a part of the spiritual transformation story. After our financial seminars, I was stunned by how many people took practical steps in addressing their finances. One young couple told me, "We have been carrying around our notebooks and tracking our expenses ever since November." Another family explained, "Since that financial seminar, we realized we really need to get back on track."

We saw spiritual growth through the support and care of our small groups. One group collected money for a family who had experienced a fire, another group cared for a leader with health issues, and another group raised funds for kids' camp scholarships.

My favorite transformation story comes from a family that experienced a crisis last year. After this family lost a loved one, multiple small groups reached out to them, bringing them meals and inviting them into community. This year two of those family members signed up for baptism and are looking forward to joining a group for the first time next fall! This is what it looks like to reach spiritually hungry people!

It's an incredible honor to witness these stories of transformation firsthand and to work with a group of people who create opportunities for these transformations. I'm so grateful for the leadership of our discipleship team and the Stephen Ministers who led these discipleship ministries so well this year.

We are already dreaming of ways to facilitate more opportunities for spiritual growth in the year ahead. This summer, we plan to create a devotional resource for new believers at ALIVE. We are also looking forward to investing in marriages and families this year and providing bible study tools through ALIVE University. Additionally, our team is raising up leaders and brainstorming ways to connect more people through small groups. As I compare the snapshots from this year to last, I cannot help but look forward to seeing next year's snapshot. What an honor it is to serve at a place where people are coming alive.

With Gratitude,  
Justine Tegen

**I follow Jesus  
unwaveringly.**

**I love my wife  
undyingly.**

**I lead my kids  
unswervingly.**

**- Man Up**





## CONNECTIONS | Beth Petersen

---

It is amazing to be part of a church that truly loves every person who walks through its doors. The call to make disciples begins with spiritually hungry people knowing they are valued by us and the God we represent. Every Sunday morning our Guest Connections volunteers are all serving in different roles, parking cars, making coffee, giving tours, and welcoming guests, all in the hopes of doing two things for every guest. First we hope to create a fantastic first impression that breaks down barriers to people hearing from Jesus, and then we want to provide clear "next steps" opportunities toward Christian community.

A highlight of this year was working alongside our Guest Connection Leadership Team to launch new teams at our Pleasant View campus. Gracie Hudson signed on to transfer ALIVE DNA to a new campus and accomplished the goal of having a team of all Pleasant View volunteers in place before August. I loved watching team captains from both campuses meet in December and March with a shared passion for the 96,000 and 24,000.

To create a first impression that breaks down barriers, we made several upgrades and changes this year. We added a beautiful new Guest Counter, iPads for a streamlined guest check-in process, improved team schedules to better serve guests, and added technology for our ALIVE grounds coffee bar. The parking team also welcomed the addition of a new parking lot, allowing them to keep cars on concrete, not grass. Providing "next step" opportunities meant implementing a new data management system to improve our guest follow-up and communications. It also ensured guests were receiving the information and contacts they needed to connect to the ALIVE community. We partnered with Student Ministries and added a special gift for students to our process, and we more strategically promoted our Discovery Classes to guests. All of this was important to the 810 guests ALIVE served this year, 170 of those at our Pleasant View Campus. We served 15,600 cups of coffee and 560 cups of hot chocolate at our Central Campus and parked countless cars. And we did all of this in hopes that barriers would come down and spiritually hungry people would have an opportunity to find a personal relationship with Jesus.

This June our Guest Connections family says goodbye to Hannah Covington as her two-year residency comes to a close. We watched God grow her gifts and saw her thrive as she serves the local church. Her fingerprints are all over this ministry. While she will be greatly missed, we are excited to see how God will use this incredible woman to build his kingdom in her next ministry.

I am forever amazed at the talented and passionate staff and lay leaders I get to work with who make ministry fun. I am grateful to Justin, Will, Sabrina and Isabel for making ministry a family affair. As assistant to the senior pastor, I am continually grateful for Tom's leadership and unwavering faithfulness to listen for and obey God's direction for his life and the body of ALIVE.

Above all, I am so grateful God called me and has allowed me to serve ALIVE Wesleyan. As ministry grows so does my understanding of how much I need him and how faithful He is!

All over our lobby on Sunday mornings there are living examples of God's transforming power. The 96,000 do walk through our doors, fall in love with Jesus, and find active roles in Christian community. It is going to be amazing to discover what new risks and territory God is calling us to in order to break down more barriers to help people find Jesus and to connect more people to Christian community.

With Gratitude, Beth Petersen

**If we don't  
learn from  
the past, we  
are destined  
to repeat it.**

**- Stranger Than Fiction**



## PASTOR OF CONGREGATIONAL CARE | Fred Andrews

---

Since the occasion of this Annual Church Conference marks the completion of 40 years of ministry in this church, my annual report this year provides me an opportunity to share a very personal testimony of God's gracious call upon my life. In 1977 while serving as a missionary in Sierra Leone, compelling health issues forced our resignation from Wesleyan World Missions. The plan laid out for us was to complete the academic year in July and return to the states. By May, we were preparing to return home while facing a very uncertain future with no idea what was next.

Into such a situation, the truth of God's Word flows. And the words of Jeremiah in Lamentations would become my strength. In the New Living Translation are these timeless words: "The faithful love of the Lord never ends! His mercies never cease. Great is his faithfulness; his mercies begin afresh each morning. I say to myself, 'The Lord is my inheritance; therefore, I will hope in him!'" (Lamentations 3: 22-24).

My story continues when in late May, 1977, I received an unexpected offer from the Local Board of this church to serve as Assistant Pastor. Without an on-site visit, and with only written descriptions of the church and the job, I accepted the offer. In my mind, I thought I would do this for a year and see what else came available. Within seven months of my arrival, a resignation by the current senior pastor created an offer for me to become Senior Pastor. As the cliché goes, the rest is history! That history includes 1 year as Assistant Pastor, 30 years as Senior Pastor, and 9 years as Pastor of Congregational Care. None of the above was my plan, but it all came from the gracious hand of God through the leadership of the local church.

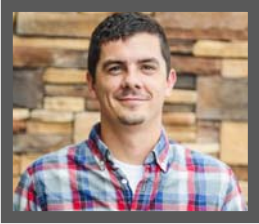
With a profound sense of gratitude to the Lord, I continue to ponder the incredible meaning of those verses in Lamentations 3. "The faithful love of the Lord never ends! His mercies never cease. Great is his faithfulness; his mercies begin afresh each morning."

One of the primary descriptions of my present job involves providing a ministry of presence to people of all ages, especially during times of crisis. This often involves senior adults since their needs tend to be more urgent. However, as I have been reminded time and again, people of all ages require pastoral care at various junctures in life. I continue to work through many others to provide this care; including all the small groups caring for each other and volunteers who assist me on a regular basis. My ministry with senior adults continues to be both rewarding as well as crucial in our mission to reach the 96,000. In particular the senior adults have taken on the challenge to pray regularly and specifically for the needs of our church and staff. This mission continues to drive us towards God on behalf of people who need a personal relationship with Jesus Christ.

Fred Andrews, Pastor of Congregational Care

**Surrender to the  
God  
who puts  
oceans in a jar.**

**- Deep Water**



## STUDENT MINISTRIES PASTOR | Matt Irvine

---

ALIVE Wesleyan Student Ministries has a lot to celebrate this year! We're so excited for the ways our students owned their faith, the church, and our mission at ALIVE Wesleyan!

### **Own the Faith**

9 Students were Baptized as ALIVE affirmed their new life in Christ! Over half of our students are engaged in weekly discipleship and community building groups above and beyond Sunday mornings and midweek services. 11 Middle and High School students are half way through the first ever AWSL (ALIVE Wesleyan Student Leadership) initiative. Each month the students participate in large-group discipleship and leadership training, read at least one book of the Bible, and engage in extra service opportunities. AWSM has provided over 100 students and volunteers with Bibles. Using the same Bible is meant to encourage unity, ease of following along with each other, and build more of a Biblical value into our culture.

### **Own the Church**

15 Students attended Student Discovery (an additional group opted for Adult Discovery Classes), where they learned more about God, ALIVE, and taking their next step. 15 AWSM 2016 graduates stood on stage last spring. One graduate is attending school out of state, and of the 14 who are local, almost all are strongly plugged into ALIVE and AWSM in various roles weekly. This means they're continuing to choose to own ALIVE as their church! AWSM students were added to multiple areas of service on Sunday mornings and Wednesday nights. You can now find students serving in almost every area of the church!

### **Own the Mission**

This year AWSM provided food and a speaker for FCA gatherings at Liberty Middle School, Liberty High School, Daniel High School, and for the first time — Edwards Middle School. Best estimates are that ALIVE will have fed and spoken to over 300 local students in their own schools in 2016 (many of them not associated with ALIVE). 4 Students were able to attend the CYC Student Council to learn about and prepare for more intentional prayer and spiritual leadership on their campuses. They have been leading student prayer groups on their school campus this Spring! 130 students of the 96,000 attended AWSM this year because their friends invited them!

### **Residency**

ALIVE is committed to preparing Spiritual Leaders for the future of the Church. This is the heart and soul of our Residency program. ALIVE is so proud to launch Hannah Covington, Steven Groves, and Mallory Hopkins into ministry, and to welcome a new class of Residents in June! From a student ministries perspective, Mallory shined bright in her role, spending time in both AWSM and adult worship. She is graduating better prepared personally and professionally and has shaped AWSM for the better! Please congratulate our Residents as they graduate, knowing that you had a hand in preparing them to lead well!

It was a privilege to serve ALIVE with our students and through Residency this year!

Respectfully, Matt Irvine Student Ministries Pastor



## CHILDREN'S PASTOR | Stephanie Rhyne

---

Every time I hear the vision of ALIVE, my heart grows fonder. It doesn't matter how many times I hear it, the vision resonates even louder in my soul. It moves me to do everything possible to impact the hearts of the 10,000 children in Pickens County who are unchurched. I love hearing it and I love seeing God bring it to fruition. I catch glimpses of it every week, and there are many moments I'd like to run into "big service" and grab a mom or dad so they can see what I see—kids with their hands in the air worshipping God, 9-year-olds having conversations about their spiritually hungry friends, and leaders sharing the deep conversations they are having with their kids. It all matters as we work together to reach spiritually hungry people and introduce them to Jesus.

One of the highlights this year was seeing ALIVE's vision launched at the new Pleasant View campus. A newly renovated kids space all decked out with a slide, tunnel, and fun became the place where the 24,000 unchurched people in the Belton area could find a place to belong. Whitney Sand began as the Children's Director in August and led the charge to create this environment that kids are begging to come back to. Events such as FamJam, Jingle Jam, and The Color Egg-Splosion brought many new families and kids to Pleasant View and began reaching spiritually hungry people in that community. I am so proud of Whitney's leadership and the culture she is creating for kids there.

In December, we welcomed Katelyn Elliott to our staff as the Assistant to the Children's Pastor. Katelyn has done an incredible job alleviating my daily workload and providing space for visioning and next steps. I am so grateful for her gifts and how they have already impacted ALIVE Kids.

Outreach events have been a significant part of reaching the 96,000. Walk This Way VBS, Jingle Jam, and The Color Egg-Splosion brought more than 2500 people to our campus, and we have seen new families attend ALIVE as a result. Our average Sunday morning attendance this year was 267, up 10% from 2015. On Easter Sunday, we had 411 in ALIVE Kids, Central Campus—an all time attendance high! Praise the Lord! This year, 22 kids attended Discovery Kids class with 9 kids taking the next step in their faith by being baptized. We have over 140 volunteers and an incredible leadership team who love on the kids with everything they have week in and week out. Sundays would not be possible without them.

In April, we completed a new entry area to our kids environment, with a brand new 3-D logo sign, a welcome sign, and bright new colors. We want kids to be excited the moment they walk into church, so we created an environment every child wants to be a part of.

This next year will be a big one in ALIVE Kids! We are excited about the new building plans in progress, a brand-new playground coming in a few months, and the opportunity to increase our effectiveness in reaching our community through ALIVE Kids and The Growing Place. We believe this is a huge opportunity for life transformation as we see kids, students, and adults fall in love with Jesus.

My heart beats stronger than ever before for you, your children, and 10,000 kids who have yet to know Jesus. I am honored to be a part of such a movement of God and be in a place that loves people so beautifully. I love kids and love Jesus and am humbled to serve alongside such an incredible group of people at ALIVE. Thank you for being a church that believes that kids matter and for giving them a place to come ALIVE.

Gratefully, Stephanie Rhyne





## THE GROWING PLACE | Connie Mosser

---

The Growing Place has had a very busy and exciting year. In an effort to minister to as many preschool families in our county as possible, we decided to open up the Big Kids space into two more weekday pre-school classrooms. In the Big Kids room we now have a 3-year-old class and a 4-year-old class. By doing this we were able to have two 1-year-old classes and two 2-year-old classes. This has enabled us to enroll over 34 new children in the center. In our infant room, we have 14 babies on the waiting list up through January 2018. It excites me as I see some of these families now coming to ALIVE and finding an active role in Christian community. I know that we are impacting lives on a daily basis and can't wait to see what will happen in this upcoming year!

We currently have 14 full-time teachers, 7 part-time teachers and 2 substitute teachers. All of the teachers at the center take 15 hours of continuing education classes each year. This year we also took 26 hours of Health and Safety classes, and the teachers are all CPR/First Aid certified. It's important that our staff is well trained to care for the children of TGP.

The Growing Place had several successful events in 2016. We began in May with our 4K program and graduation. The theme for the program was 80's music. It was absolutely adorable watching the children sing and dance to music that their parents grew up listening to. In May and June we also celebrated Moms and Dads with Muffins for Mom and Donuts for Dad to celebrate Mother's Day and Father's Day. In October, several of our teachers took on the responsibility of our Fall Festival. They did a wonderful job with this. The children got to jump and play on inflatables, ride in a hay wagon, collect candy by trunk or treating and play games. Our Christmas Program was called "The Colors of Christmas." The children did a wonderful job sharing how the colors represent Jesus' love for us. Hosting the Christmas program in the auditorium was an awesome introduction of ALIVE to many of our non-church attending families.

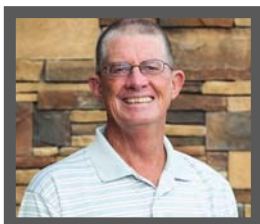
With all of this growth, I am so excited to look toward the future as we expand the children's wing. The Growing Place is a ministry of ALIVE, and the staff at the center are invested in reaching the 96,000 of Pickens County. I can't wait to see what God has planned for us in the coming year! Please continue to pray for me and my staff as we reach out to the young lives that we interact with each and every day.

Connie Mosser  
The Growing Place, Director

The  
opposite  
of **faith** is  
**unbelief.**

- Be The Hope





## OPERATIONS PASTOR | Pete Wood

---

It may seem strange, but I enjoy the times we are asked to slow down and reflect on the past twelve months. This reflection allows an opportunity to evaluate, make adjustments, and rejoice in the many ways God has used the wonderful people of ALIVE to reach the 96,000 in Pickens County and the 24,000 un-churched people surrounding our Pleasant View Campus. It is an honor to be a part of such a movement, and I count it a privilege to work with such a great staff and so many dedicated volunteers.

A snapshot of our church calendar will give you an idea of just how active ALIVE has been in utilizing and preparing our facilities to reach our community with the love of Christ.

Allow me to share a few facts with you:

- 2,750 hours of Childcare by The Growing Place with over 120 kids attending
- Approximately 900 meetings of small groups
- Over 310 Worship events
- 34 Special events such as weddings, funerals, community events, and parties
- 480 Team/Staff meetings
- Over 1,710 hours of custodial care
- Over 420 volunteer hours of yard care and landscaping
- A full renovation of the Pleasant View campus facility. This included the construction of a large Kids space (complete with stage, sound booth, tunnel and slide), renovation of the worship space and stage area, new landscaping and grass, addition of coffee and guest areas and facelifts for restrooms.
- Facility Improvements to main campus during the past year include the landscaping of front entrance, LED lighting campus wide, painting of Youth and Kids check in areas, and 2 newly paved parking lots (finally)! Work has also begun on 2 new playgrounds for kids.

A personal highlight each year are the Discovery Classes we offer approximately every two months. These classes give us a snapshot of how we are doing at reaching new people. Hearing the various stories of what attracted these new folks to ALIVE is always encouraging. The desire and urgency that so many of them feel to get connected on a deeper level challenges us every time we interact with them. This past year, 7 classes were offered with over 125 attending. The denominational push for membership reaffirmation was challenging, but helpful, as we contacted all members and explained the reasons for each of us to renew, reaffirm and reconnect to the church.

As we look to the future, we are excited about what God will be doing in the coming days at ALIVE. New spaces for kids to worship, learn about Christ, and play are in the works. A burning desire to continue expanding our reach to spiritually hungry people that God has surrounded us with drives myself and the leadership of ALIVE. We must not become complacent but continue to press on – seeking His guidance and giving Him the glory and honor for all that is accomplished for good through ALIVE!

Respectfully, Pete Wood, Operations

**How we give is a great  
indicator  
of where our  
hearts  
are when it comes to  
God.**

**- Money Talks**



## CAMPUS PASTOR, PLEASANT VIEW | Kehl Hudson

---

Once again I find myself grateful for another year to do ministry under the banner of ALIVE. I'm continually amazed at the people I get to work with, both staff and volunteers, who give countless hours to helping spiritually hungry people find personal relationships with Jesus. To best describe this past year, there is a single phrase that comes to mind — "full of life."

As I write, I can't help but think of Easter and the new life that is so evident this season. I can't help but remember the new life Jesus offers as he transforms those who follow him and impacts those who bump into Him. At ALIVE we've seen that take place as we've reached out to the 24,000 people within five miles of our Pleasant View Campus. This whole year has been focused on asking God to use us as vessels to communicate his life transforming power.

Throughout the year, we saw God's new work in many ways and most recently saw this "full of life" idea expressed through the April Egg-splosion event. We saw around 350+ people come that day. None of us had a clue what the morning had in store. I looked around that day and saw wide-eyed looks from staff and volunteers as new faces started driving up. What a beautiful picture of this past year! Our body was faithful to God's call, and he blew our expectations out of the water!

It is an understatement to say there has been a monumental shift for the ALIVE community running around in Belton, SC. With our official launch in September, ALIVE, Pleasant View has gone full-bore—building relationships, establishing connections, and reaching out to the communities around us. This year small groups put on laundromat events to wash people's clothes; people went to local rehab homes to do yard work; kids and youth departments created specific events targeting the 24,000. We even opened our doors to local rec teams for their awards ceremonies. God has used us to spark conversations in our community about who he is and what he wants to do in the greater Anderson area.

Within the past year we saw this "full of life" momentum show up in the 120+ people who came through our doors on a Sunday morning. It was "full of life" with events like the Open House, Jingle Jam, and the Egg-Splosion egg hunt bringing well over 600 people total from those events. We saw this "full life" displayed in how people gave to the mission and vision of ALIVE with a 25% increase in giving. Our people are giving to what they believe in, building their lives around the local church, and giving of their time and finances to see people find a personal relationship with Jesus Christ and an active role in Christian community.

So what's next? As a campus, we are just gearing up. God has started taking ground for His Kingdom, and lately I've been thinking on this verse from 2 Chronicles 16:9 as I look to the next year: "For the eyes of the Lord range throughout the earth to strengthen those whose hearts are fully committed to him..."

This has been my prayer for us. That we'd be a people fully committed to Him. As we look forward, we must remember where God has led us from and stand firm in our dependence on him as we take new ground and continue being "full of life."

Gracie and I are incredibly grateful to be a part of ALIVE, and more specifically, I'm grateful to be your Campus Pastor. We've loved the past year and were moved by how you graciously welcomed us into the ALIVE family.

Respectfully, Kehl Hudson

**Jesus  
seems to  
take joy in  
answering the  
cries  
of desperate  
people.**

**- All I Want For Christmas**



## RESIDENT | Hannah Covington

---

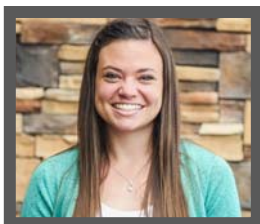
Wow! Two years seem to have flown by! It feels like just yesterday I was walking into ALIVE for the first time as a Resident. I have learned and grown more in the past two years than I ever imagined I would. The opportunities I have had while serving at ALIVE have been so impactful, from meeting first time guests and now seeing some of them actively serving, to having the opportunity to be a part of Night to Shine. I have learned what ministry is and what it is not. I would not trade these experiences for anything in the world. Most importantly, I am so thankful to have had the opportunity to serve the 96,000 alongside an amazing staff and group of volunteers.

Over the past two years, I have been able to work with an incredibly dedicated team of volunteers. Our Guest Connections volunteers make Sunday mornings possible. They create an atmosphere of community that is both welcoming and comfortable, ensuring our guests feel valued and at ease at a time that can be incredibly overwhelming, even intimidating. Over the past year, I have been able to serve as the Team Captain for one of our volunteer teams. These volunteers are phenomenal. I have learned so much from them, and it has been remarkable to connect and build relationships with them. Our Guest Connections team is truly a committed group of people that have not only grown numerically over the past few months but are falling more and more in love with the mission and vision of ALIVE. This group continues to love and embody the passion of Guest Connections—reaching spiritually hungry people in our community. Working with Guest Connections has given me the opportunity to assist with trainings, build relationships, and develop portions of the Sunday morning ALIVE guest experience. Working with a variety of ALIVE volunteers has challenged me and created new opportunities to expand my leadership skills.

On February 10, 2017, ALIVE Wesleyan had the opportunity to once again host Night to Shine, a prom event for people with special needs sponsored by the Tim Tebow Foundation. I was blessed to work with a gifted leadership team throughout the planning process for this special night. Our leadership team comprised of Beth Petersen, Dr. Joe Ryan and Chris Egan of ClemsonLIFE, Chuck Mealy, and Heather Boyd. This experience brought almost 800 people to our campus, including 245 special guests! It was incredible to see so many ALIVE members and other community volunteers come together to make this night possible. Working with Night to Shine and having the opportunity to show God's love to the special needs community of Pickens County and beyond has forever changed my life. I look forward to seeing how ALIVE continues to love the special needs community through Night to Shine and other opportunities in the future.

As I complete my second and final year as a resident, I feel incredibly thankful to be a part of something so focused on life-transformation. I have learned so much about what it means to be in ministry and to be surrounded by such a strong community of believers. I am thankful to be supported by a staff that has graciously allowed me to experience ministry alongside them as well as encouraging me daily to continue to grow as a person, a minister, and as a believer in Jesus. While I am so sad to go, I am incredibly thankful for my time here and I know I am a better person and a better leader because of the people of ALIVE and the opportunities I have had here.

Hannah Covington



## RESIDENT | Mallory Hopkins

---

The past year of Residency has grown me in so many different ways. I have learned more about myself as a leader, and my time here has stretched my views on what it means to do ministry at a local church. I know this is helping prepare me as I step into the next chapter of ministry. I have had the opportunity to lead and develop the planning process for ALIVE Student Ministries, be a part of creative team meetings, lead worship on Sunday mornings, and mentor students in their spiritual growth journeys.

One of the biggest areas of change I have had the privilege to be a part of is implementing creative and production teams for the Student Ministry. In the past, Matt and I cared for this together; however, now we have opened the creative process to include many of our key volunteers. Weekly our team sits down and critically thinks about what the 10,000 unchurched students in Pickens County would want to see and experience in our Student Ministry. Some of the creative elements that have come out of this process are broom hockey, get to know you table topics to build authentic community, and enhanced branding for each series. Our volunteers give an hour and a half of their time each Tuesday to actively create and strategically develop every aspect of the youth program. We have also added a student ministry production meeting to review what needs to be accomplished for the upcoming Wednesday night. In this meeting, we think practically about what next steps need to be taken in the planning process and how we can actually implement the creative ideas we dream up. Both of these groups of people serve the purpose of creating excellent environments for our students. We want them to anticipate the unexpected and invite their friends to a place where they can be a part of authentic Christian community and find personal relationship with Jesus Christ.

This year I also was able to play a big part in three of our biggest events in youth ministry. I led the development of the Color War, which was an end of the school year event involving a mixture of capture the flag with colored powder. I also helped implement the administration and marketing for our fall kick-off event—a house party that focused on how God is the hope of the world. I also worked on our Youth Christmas party. This year we gave the students something fun to do: inflatables, coloring books, and a potluck (Teenager potluck? Who would've thought?). We ended the night with a great reminder of how Christmas is a time when we gather around family, but more importantly, God's family. Each of these events reached students who had not been a part of the ALIVE community before—effectively drawing in more and more of the 10,000 unreached students that are part of our 96,000 vision.

After this Residency program, I feel encouraged, equipped, and ready to step into the next season of life and ministry. Everything I have learned as a Resident has helped me know what it means to be a high capacity leader and work in a healthy and successful local church. I will always look back on the past two years at ALIVE with fondness and excitement.

Respectfully,  
Mallory Hopkins





## RESIDENT | Steven Groves

---

When Jesus called each of his closest followers he went to them and said “come and see.” As I complete my 5<sup>th</sup> year in ministry, I look back on that day in my life and feel honored to have heard that call. While I may have thought that it was a one-time answered calling, in scripture I see Jesus asking his followers to go further and further with him repeatedly. What I am learning is that every year, every month, even every day, the Lord is still inviting me to come and see. One of the most significant calls came only a year and a half ago when I joined the ALIVE family. Over the last 18 months I have been immersed in different areas of ALIVE’s ministry and it has been transformational.

I’ve been invited to learn excellence in worship services and have been part of planning and implementing strategies and elements into worship services. I have learned so much from the ALIVE worship team leadership and members. I’ve caught a new level of compassion for children and have seen how fulfilling it can be to see them “get” Jesus, as I have been part of multiple Outreach events in our community with ALIVE Kids. ALIVE Students have shown me, in all new ways, the importance of authentic community in the body of Christ. The philosophy behind why they do what they do is so different from most other youth groups. Through my experiences with Small Groups, I have had my eyes opened to the value of closeness within the church and I’ve learned how to lean on my church family as well as allow them to lean on me. We need each other and ALIVE is built on that; part of ALIVE’s mission is to help people find an active role in Christian community.

I am grateful to everyone who has been involved in the Pleasant View campus as I have experienced the excitement and contagious enthusiasm for what God is doing there. They have pioneered in a new community where they are spreading the gospel of Jesus in a whole new way, and I have been engaged first-hand from the remodel of the building to leading from the platform. This extension of ALIVE is reaching the Belton/Williamston areas!

My residency coach and other ALIVE staff have challenged me throughout my time here to strive for excellence, care more, do more and say more. I know that God has used their leadership to shape me and grow me. I have watched Pastor Tom lead the staff and the congregation with love, truth and grace while ensuring a burden for spiritually hungry people stays at the center of all that ALIVE does.

I cannot overstate how thankful I am that the call to follow God and serve in ministry has been a call to be at ALIVE. I have never seen a church so full of people on mission and so passionate about reaching the 96,000. My wife, Megan, and I are forever changed because we came to ALIVE. Everywhere we go and everyone we lead from here will be impacted by our experience in this community.

The call to come and see continues for us as we end the residency at ALIVE and go on to what is next. Starting in July, I will be joining the Resident Life staff at Southern Wesleyan University as a Resident Director. We are so excited for this new ministry opportunity.

Steven Groves

**Everyone's  
marriage  
becomes  
something they  
did not expect.  
- Under Review**





# GLOBAL OUTREACH TEAM

---

Mark 16:15 - He said to them, "Go into all the world and preach the gospel to all creation."

The 2016-2017 Global Outreach Team has had an exciting year serving as the hands and feet of Jesus. The support of the church body has exceeded anything we could have imagined. As a team we pray bold prayers. We serve a mighty God, and we have been blown away by all that has happened on behalf of our long-term and short-term partners. The continued relationships we have with each partner have kept us focused on why we do what we do. Consistent communication with these partners has kept our prayer requests focused and intentional.

## Long-term partner highlights

Joy and Dan Irvine: Oversight of 200 Wesleyan churches, 80 Christian schools, a School of Nursing, a Hospital, a Community Health Initiative, and multiple agricultural projects

Ryan and Melissa Seibert (Oliver): Ryan teaches at a University as the Director of Culture, Ministry Training and Member Care. Melissa is an advisor with Women of Hope NGO and Member Care. They serve under the auspices of ELIC (English Language Institute China).

Jonathan and Cheryl Schmutz (Lucas, Jude, and Baby on the way): Translating the New Testament and portions of the Old Testament into the Oyta language, helping facilitate literacy and distribution, along with working with the local arts.

Bob and Brenda Bagley: Oversight of the Wesleyan Church in Africa (19 countries), Teaching on Ministry of Discipleship and Leadership Matters in Swaziland and Zambia. Please pray for discernment and wisdom as they coach and advise African Leaders and Global Partner missionaries.

Dave and Donna Tolan: Catalyst for developing passion for missions through activities at SWU, as well as leading short term trips, teaching and oversight to ministry practicum students

Okiye: 74 children are under the care of Mme. Soliette, and 300 students attend school on the porches of each house in the Children's Village. The next big project is the building of a school.

Rupak Shankar: Oversight of 21 pastors and each of these pastors oversees 2-3 house churches in Nepal, India, and Bhutan. Forty-two new villages were reached this year. Thirty people will be trained for ministry. Twenty new believers were baptized on Good Friday. Rupak is rejoicing in the tribes coming to Christ.

## Short-term partner highlights

Funds were dispensed to the following opportunities: SWU students for missions in Myrtle Beach and Nairobi, Kenya. A team of twenty-four went to La Gonave, Haiti (Construction, Kids Ministry, and Teacher Teams). Funds were also used to support Essie Cade and a small team to support the Tender Touch Ministry. Josh Mullinax received funds to participate in a project with Extollo International. We extended funds for Bob Vermarie for the Hospital on La Gonave. Lauren Culberson had the opportunity to go to Guatemala. Gideon International was also supported.

## How can you continue to support? Pray-Give-Go

Intentionally Pray. Faithfully Give. Go! These are various ways to support those in our church body who heed the call to serve in corners of the world that we can't begin to understand. Maybe God is even calling you.

The 2017-2018 Global Outreach Team is excited to see how God will direct and provide this next year as we reach spiritually hungry people around the world.

Blessings,  
Debra Nodine  
Global Outreach Chairperson

**Stated values  
and actual values  
are not always  
the same thing.**

**- Blueprint Of A Movement**



## TREASURER | Charles Tegen

---

The financial report for the past year reflects the ministries of ALIVE Wesleyan and our stewardship in reaching our communities in the Central and Belton areas. Most people consider a financial report as routine. This report is not the normal for the church world. It is written with praise to God for providing resources through your obedience and generosity and His faithfulness.

A summary of financial highlights follow

- Received \$1,965,350 in Tithes and Offerings, an increase of \$392,000 or 25% over the past year.
- Continued growth in The Growing Place resulted in an increase in the support of ALIVE ministries.
- Received an unsolicited initial gift contribution of \$30,000 for Hope Grows Here campaign.
- The 96,000 Reach fund enabled ALIVE Wesleyan to invest in the Pleasant View campus and address needs for parking on the Central campus. It also allows us to plan and resource ALIVE to meet future ministry opportunities in reaching our community and world.
- The staff managed within the budgeted amounts.
- Reduced our mortgage to the Wesleyan Investment Foundation; initially \$2.7 million to currently \$1.5 million, or \$210,000 this past year.

A special thanks to the leadership from the Finance Team, the tellers who contribute their time behind the scenes weekly, and Christin Harrison for their support.

God continues to be faithful to resource ALIVE Wesleyan Church with people and financial resources. May we continue to be faithful and good stewards to reach the spiritually hungry people in our communities.

Charles Tegen, Treasurer

# ALIVE YEAR END FINANCIAL REPORT

## 2016 / 17 CHURCH YEAR

### CASH ACCOUNTS

First Citizens - Operating	<b>\$ 264,901</b>
Wesleyan Investment Foundation	<b>418,324</b>
First Citizens - The Growing Place	<b>32,011</b>
Total Cash Accounts	<b>\$ 715,236</b>

### DEBT

Wesleyan Investment Foundation	<b>\$ 1,520,886</b>
--------------------------------	---------------------

SUMMARY BALANCES	May 1, 2016 Balance	Receipts	Expenses	April 30, 2017 Balance
General Fund	\$ 156,235	\$ 2,180,179	\$ 2,178,012	<b>\$ 158,402</b>
Building Fund	462	36,657	22,994	<b>14,126</b>
Hope Grows Here	—	30,000	—	<b>30,000</b>
Campaign & Preconstruction	—	25,000	2,961	<b>22,039</b>
The Growing Place Activities	57,880	566,384	563,313	<b>60,951</b>
96,000 Reach	155,725	493,636	266,242	<b>383,118</b>
Memorials	—	10,275	—	<b>10,275</b>
Small Group Activities	4,516	12,780	13,830	<b>3,466</b>
Outreach Activities	27,550	5,184	11,899	<b>20,835</b>
Operating Activities	<u>11,920</u>	<u>23,499</u>	<u>23,395</u>	<u><b>12,023</b></u>
<b>TOTALS</b>	<b>\$ 414,287</b>	<b>\$ 3,383,595</b>	<b>\$ 3,082,646</b>	<b>\$ 715,236</b>

# ALIVE YEAR END FINANCIAL REPORT

## 2016 / 17 CHURCH YEAR

	Year to Date	Budget	Difference	Percent of Budget
<b>INCOME</b>				
Tithes & Offerings	\$ 1,965,351	\$ 2,000,000	\$ 34,649	98.27%
Sunday School	1,558	–	(1,558)	–
Interest Income	5,684	4,000	(1,684)	142.09%
Other Income	5,143	–	(5,143)	–
The Growing Place	202,444	196,000	(6,444)	103.29%
<b>INCOME TOTAL</b>	<b>\$ 2,180,179</b>	<b>\$ 2,200,000</b>	<b>\$ 19,821</b>	<b>99.10%</b>
<b>EXPENDITURES</b>				
<b>Salaries</b>				
Pastors	\$ 383,981	\$ 414,504	\$ 30,523	97.98%
Ministry Support Staff	79,527	112,157	23,630	70.91%
Office Support Staff	88,245	57,324	(30,921)	153.94%
Custodial	20,499	21,866	1,367	93.75%
Internship	37,575	36,675	(900)	102.45%
Security	4,950	5,400	450	91.67%
Salaries Totals	614,777	647,926	33,149	94.88%
Fringe Benefits	158,352	150,751	(7,601)	105.04%
Salaries and Benefits Totals	\$ 773,129	\$ 789,677	\$ 25,548	96.80%
<b>Ministries</b>				
Worship	\$ 43,250	\$ 45,545	\$ 2,295	94.96%
Outreach	129,143	126,950	(2,193)	101.73%
Fellowship	14,253	15,290	1,037	93.22%
Service	10,858	11,110	252	97.73%
Discipleship	32,854	30,810	(2,044)	106.63%
96,000 Reach	460,000	460,000	–	100.00%
Ministries Totals	\$ 690,358	\$ 689,705	\$ (653)	100.09%
<b>Operations</b>	<b>\$ 110,173</b>	<b>\$ 118,412</b>	<b>\$ 8,239</b>	<b>93.04%</b>
<b>Facilities &amp; Equipment</b>				
Building Payment	\$ 284,716	\$ 284,596	\$ (120)	100.04%
Improvements / Repairs	45,163	59,148	13,985	76.36%
Equipment / Technology	51,650	47,000	(4,650)	109.89%
Facilities & Equipment Total	\$ 381,529	\$ 390,744	\$ 9,215	97.64%

## FINANCIAL REPORT CONTINUED

---

	Year to Date	Budget	Difference	Percent of Budget
Utilities	\$ 58,911	\$ 63,550	\$ 4,639	92.70%
General and District Budget	138,912	138,912	—	100.00%
Other	25,000	—	(25,000)	—
<b>EXPENDITURES TOTAL</b>	<b>\$ 2,178,012</b>	<b>\$ 2,200,000</b>	<b>\$ 21,988</b>	<b>99.00%</b>
Over / (Under)	\$ 2,167	—	\$ (2,167)	—

**Jesus has done the  
heavy lifting,  
and He wants to  
make you  
clean.**

**- Curtain**

# SAMPLE BALLOT

May 21, 2017

## Local Board of Administration (Elect 2)

☐ Ken Hall  
☐ Emily Germaine  
☐ Greg Lewis  
☐ Deb Nodine  
☐ \_\_\_\_\_

## Current LBA Members and Classes

*Senior*      Betty Mearl  
                  Josh Ray

*Junior*      Bob Black  
                  Kathy Swank

## 2016/17 Ex Officio

*Treasurer*

Charles Tegen

*Secretary*

Dana Frost

*Senior Trustee*

Tom Childress

*Special thanks to Pam Fapps,  
 John Frazier, Dana Frost,  
 Charles Tegen, and Tom  
 Childress for their service on the  
 LBA.*

## Nominating Committee (Elect 3)

☐ Tricia Amdt  
☐ Karla Hall  
☐ Rhonda Ray  
☐ \_\_\_\_\_

## Delegates to District Conference (Elect 11)

*Once our eleven officers are  
 selected, alternates to District  
 Conference will be determined  
 by the next highest votes  
 received.*

☐ Sonnie Andrews  
☐ Judy Black  
☐ Emily Bixdorf  
☐ Jackie Bryant  
☐ Pam Fapps  
☐ Karla Hall  
☐ Betty Mearl  
☐ Harriet Nash  
☐ Susan Potter  
☐ Josh Ray  
☐ Deanna Tegen  
☐ Frances Young  
☐ \_\_\_\_\_

## Tellers

### Central (Elect 10)

☐ Virginia Baumann  
☐ Janice Bishop  
☐ Phillip Boyer  
☐ Rachel Day  
☐ Holly Delgado  
☐ Bettie Hudson  
☐ Heather Schaupp  
☐ Deanna Tegen  
☐ Luisa Weinberg  
☐ Jill Williams

### Pleasant View (Elect 7)

☐ Wilma Bolt  
☐ Blake Couch  
☐ Rick Gilbert  
☐ Bettie Hudson  
☐ Betty Kelly  
☐ Tonya Kelly  
☐ Cruze Thompson

### Trustee (Elect 1)

☐ Jon Stanley  
☐ Chris Colberg

## Church Secretary (Elect 1)

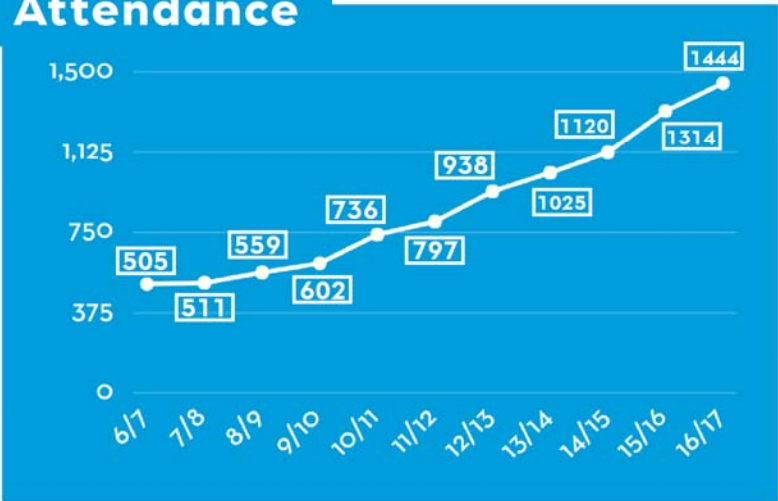
☐ Bond Matthews  
☐ Heather Touchberry





10 YEAR TRENDS

Attendance



2016- 2017 Statistics

**1,444**  
Average Attendance



Membership



**691**  
Members

Income



**INCOME**  
**\$2,180,179**



## Facebook Year in Review

**1.6**  
MILLION

**times people saw  
Alive on Facebook**



**1,609**  
**Likes**  
One Year Ago

**2,093**  
**Likes**  
NOW



Your Facebook Check-ins reached over  
**250,000 people.**

## Youtube Year in Review

**13,800**  
views this year.



**96,661**

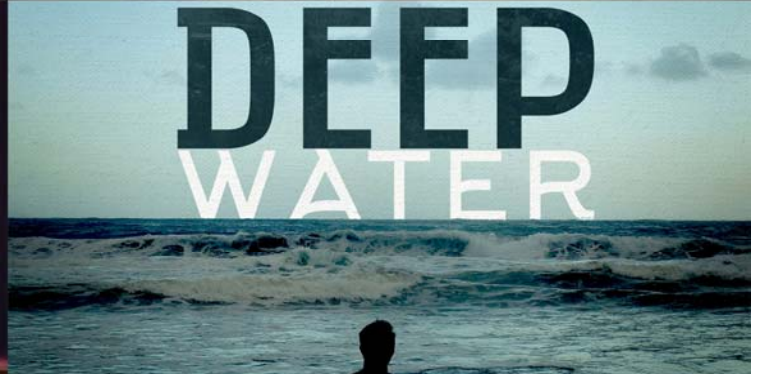
**LIFETIME VIEWS**

"Love this church and the people!  
And we especially love our Barefoot  
hiking group! My daughter looks  
forward to coming to church and  
loves talking and learning about  
Jesus"



-Alive Social Media Review  
(Facebook)





# RECOMMENDED BUDGET

2017 / 18 CHURCH YEAR

	2016-2017 Actual	2016-2017 Budget	2017-2018 Budget
<b>INCOME</b>			
Tithes and Offerings	\$ 1,965,351	\$ 2,000,000	\$ 2,200,000
The Growing Place	202,444	196,000	200,000
Interest Income	5,684	4,000	5,000
Miscellaneous	6,700	—	—
<b>INCOME TOTAL</b>	<b>\$ 2,180,179</b>	<b>\$ 2,200,000</b>	<b>\$ 2,405,000</b>
<b>EXPENDITURES</b>			
Salaries and Benefits	\$ 773,129	\$ 798,677	\$ 893,133
Ministries			
Worship	43,250	45,545	55,514
Outreach	129,143	126,950	186,420
Fellowship	14,253	15,290	11,950
Service	10,858	11,110	8,810
Discipleship	32,854	30,810	32,817
96,000 Reach	460,000	460,000	300,000
Ministries Total	\$ 690,358	\$ 689,705	\$ 595,511
Operations	\$ 110,173	\$ 118,412	\$ 123,107
Facilities and Equipment			
Building Payment & Capital	\$ 284,716	\$ 284,596	\$ 384,596
Improvements/Repairs	45,163	59,148	54,700
Equipment/Technology	51,650	47,000	97,500
Utilities	58,911	63,550	66,075
Facilities and Equipment Total	\$ 440,440	\$ 454,294	\$ 602,871
Other	\$ 25,000	—	—
General and District Budget	\$ 138,912	\$ 138,912	\$ 190,378
<b>EXPENDITURES TOTAL</b>	<b>\$ 2,178,012</b>	<b>\$ 2,200,000</b>	<b>\$ 2,405,000</b>



# HOPE GROWS HERE CAMPAIGN

---



**Our Vision:** ALIVE exists to reach spiritually hungry people and introduce them to a personal relationship with Jesus Christ and an active role in Christian community.

**Our Mission:** In Pickens County, there are 96,000 unreached people, which include 10,000 children and 10,000 students. When we die, these numbers will be less. There is no price too great, no call too difficult to reach the 96,000 currently facing a Christ-less eternity. God has opened opportunities within the last year to reach 24,000 spiritually hungry people in Anderson County and is now calling us to plant churches and campuses across the upstate.

**Our Story:** The story of ALIVE Wesleyan Church began in 1893. We have a proud history in the holiness tradition and tend to be a conservative congregation who is willing to take risks in order to reach. In 1910, we moved to a newer facility on Gaines Street. In 1930, the church began meeting on the college campus of Central Wesleyan College. Ten years later in 1940, our first service was held in the sanctuary on Wesleyan Drive. Additional space was added to the facility in 1975 and 1996, and we have repeatedly used other facilities to better reach the community. In 2001, we merged with Clemson Wesleyan Church and started ALIVE in 2004. Our preschool child enrichment center, The Growing Place, was launched in 2005. We moved into our current facility in Spring 2013.

Since moving into our new facility, our Sunday morning attendance has increased by 52%. The Growing Place has more than doubled in size, increased its revenue by 1,933%, and has reached our enrollment capacity. In 2016, we began a four service schedule on Sunday mornings and planted our first campus in Anderson County to reach the 24,000 unchurched people in Belton, SC.

There is a serious call on ALIVE to be a New Testament church. We pursue this call by committing to the five marks of the New Testament church: Adoring our God, Loving our community, Instructing Believers, Valuing the Lost, Equipping for ministry. We program and budget according to these New Testament marks. We are committed to the vision, and it is our desire to create a place where people can come ALIVE and experience spiritual transformation!

**The Opportunity Before Us:** In order to continue to be effective in reaching our community and be a place where kids, students, and adults come ALIVE, we have the opportunity to construct an expansion of our Children's facilities. This expansion would increase small group and large group spaces, additional office space, new play ground site and recreational pieces, as well as increased classrooms for The Growing Place. After studying ALIVE, it became evident that we were positioned for growth in our worship environments, but were behind for growth in parking and children's space. The current parking and children's space issues are working against the mission of reaching the 96,000, making some feel uncomfortable due to over crowding. The Growing Place is functioning at capacity and the new facility will double our reach to families seeking assistance with caring for their children.

**The Answer to Our Opportunity:** In order to effectively reach the children and families of our community and increase opportunities for life transformation in kids, students, and adults, we want to create a cutting-edge children's facility to include:

- Large group gathering space for elementary kids
- Large group gathering space for pre-school
- Additional 8 classrooms, doubling the amount of families we currently minister to at The Growing Place
- Office space for 15 additional staff
- Larger family viewing venue
- Larger kids guest services area
- New playground site and recreational pieces

Unique pieces to the new facility include:

- A slide and tunnel into kids environments, interactive screens, and state of the art check-in
- Streamlined kids guest experience
- Increased technology in elementary and preschool worship spaces
- Unique and separate entryway for families with children

If we fail to do this now, we are lessening our effectiveness and ability to reach the 96,000. Our children's ministry has capacity guidelines that have been reached and failing to complete this now, will limit programming and creative teaching strategies. It will not be possible for The Growing Place to exceed current attendance or have opportunities to increase revenue for the church. This revenue creates additional funds for enlarged vision as well as greater impact to families in our community. Additional staff hires will be limited and optimal staff performance will be limited due to space constraints.

**The Cost:** The cost of the project is \$3.5 million.

**The Outcomes:** By embracing this opportunity and completing the project, we believe our scope of ministry will be expanded, we will see greater engagement in discipleship, and more opportunities for life-transformation will be possible. The outcomes of this project have the potential to transform an entire county and cause an incredible ripple effect.

- Greater potential to reach and impact 10,000 unchurched children in Pickens County
- Increased ministry to the parents and families of the 10,000 unchurched children in our community
- To broaden our reach to 6000+ preschoolers in our county through The Growing Place
- Increased attendance, salvations, baptisms
- Children embracing the vision of ALIVE and reaching their friends of the 96,000
- New opportunities for the congregation to impact the hearts of children through serving



